

Sales Tax Collection Report
For The Month Ending 9/30/12
August 2012 Sales

Report Prepared By The Sales Tax Department

Lafayette Parish School System

**Sales Tax Report
Table of Contents**

Page 3 Sales Tax Recap of Gross Receipts Collected During September 2012 for all Jurisdictions

Page 4 Schedule of Pro-Rata Expenses & Interest Income, September 2012
Schedule of Increase/Decrease in Cash Received, September 2012

Page 5 Revenue Distribution Recap

Page 6 Budget Variance Schedule Recap, September 2012

School Board 1965 Sales Tax (1%):

Page 7 Statement of Revenue and Expenses, September 2012 - Distribution of Revenues

Page 8 General Fund Revenues Compared to Budget

Page 9 Graph of Gross Receipts (Fiscal Years 08/09 thru 12/13)

School Board 1988 Sales Tax (1/2%):

Page 10 Statement of Revenue and Expenses, September 2012

Page 11 General Fund Revenues Compared to Budget

Page 12 Graph of Gross Receipts (Fiscal Years 08/09 thru 12/13)

School Board 2002 Sales Tax (1/2%):

Page 13 Statement of Revenue and Expenses, September 2012

Page 14 General Fund Revenues Compared to Budget

Page 15 Graph of Gross Receipts (Fiscal Years 08/09 thru 12/13)

Lafayette Parish School System

Sales Tax Recap For The Month Ending September 30, 2012

Note: This schedule represents taxes collected in September 2012 on August 2012 sales.

Tax	Tax Rate	Taxable Sales	Sales Tax Less Vendors Comp.	Food & Drug Exempt Tax	Penalty & Interest	Audits	Dept. of Motor Vehicle Distribution	Total Cash Received	Pro-Rata Percent
Sch Board '65	1 %	\$ 424,294,055	\$ 4,190,477	\$ -	\$ 29,655	\$ 52,178	\$ 433,030	\$ 4,705,340	25.18%
Sch Board '88	1/2 %	364,646,975	1,842,416	298,235	15,048	26,090	216,510	2,085,016	11.17%
Sch.Board '02	1/2 %	364,646,975	1,842,416	298,235	15,048	26,090	216,510	2,085,016	11.17%
Parish Gov.	1 %	30,628,874	290,723		701	2,674	161,400	454,797	2.44%
Sheriff, Laf Parish	1 %	30,628,874	290,723		701	2,674	161,400	454,797	2.44%
Lafayette '61	1 %	310,059,561	3,042,672		26,037	46,828	195,489	3,311,026	17.73%
Lafayette '85	1 %	260,353,661	2,545,613	497,059	26,037	46,828	195,489	2,813,967	15.07%
Lafayette TIF Zones	1 %	8,426,077	84,838		427	-	-	85,265	0.46%
Broussard	2 1/2 %	44,040,307	1,123,669		2,181	1,350	56,344	1,181,363	6.33%
Carencro	2%	14,004,350	280,087		2,105	-	24,524	304,611	1.64%
Carencro TIF Zone	1%	6,721,071	61,119		248	6,684	98	67,901	0.36%
Duson	2%	1,353,513	35,268		171	-	3,452	38,720	0.21%
Scott	2 %	13,776,202	279,487		2,433	-	22,602	302,089	1.62%
Scott TIF Zones	1 %	3,029,377	31,235		82	-	1,030	32,265	0.17%
Youngsville	3 1/2 %	10,431,248	362,734		950	-	74,619	437,353	2.34%
Total Sales Tax			16,303,477	1,093,530	121,824	211,396	1,762,497	18,359,526	
Hotel/Motel Tax	4%	7,782,625	311,305		-	-	-	311,305	1.67%
TOTAL			\$ 16,614,782	\$ 1,093,530	\$ 121,824	\$ 211,396	\$ 1,762,497	\$ 18,670,831	100.00%

Lafayette Parish School System

Schedule of Pro-Rata Expenses & Interest Income, September 2012

Tax:	Pro-Rata Percent	Pro-Rata Share of Expense	Pro-Rata Share of Interest Inc.
Sch.Bd. '65	25.18%	\$ 22,539	\$ 2,130
Sch.Bd. '88	11.17%	9,999	945
Sch.Bd. '02	11.17%	9,999	945
Parish	2.44%	2,184	206
Sheriff, Laf Parish	2.44%	2,184	206
Laf '61	17.73%	15,871	1,500
Laf '85	15.07%	13,489	1,275
Laf EDD - 103	0.46%	412	39
Broussard	6.33%	5,666	535
Carencro	1.64%	1,468	139
Carencro I-49 EDD	0.36%	322	30
Duson	0.21%	188	18
Scott	1.62%	1,450	137
Scott EDD - AP	0.17%	152	14
Youngsville	2.34%	2,095	198
Hotel/Motel	1.67%	1,495	141
Total	100.00%	\$ 89,513 (Note 1)	\$ 8,458

Note 1: The detail of these expenses by cost category is listed on pages 7, 10, and 13.

Note 2: The cost of operation (operating expenses divided by cash received) is 0.5%.

Schedule of Increase/Decrease in Cash Received, September 2012

Tax:	September 2012 Cash Received		YTD Cash Received	
	Compared to September 2011		Compared to Prior YTD	
Sch.Bd. '65	\$ 370,991	8.6%	\$ 1,545,659	11.6%
Sch.Bd. '88	152,970	7.9%	590,698	10.1%
Sch.Bd. '02	152,970	7.9%	590,698	10.1%
Parish '72	(45,608)	-9.1%	139,522	9.6%
Sheriff, Laf Parish '03	(45,608)	-9.1%	139,522	9.6%
Laf '61	223,539	7.2%	672,151	7.1%
Laf '85	193,761	7.4%	526,519	6.5%
Laf EDD - 103 '08	10,975	14.8%	89,299	51.8%
Broussard '75, '92 & '12	380,710	45.3%	1,428,781	53.2%
Carencro '67 & '93	88,694	41.1%	240,808	39.3%
Carencro I-49 EDD '09	34,833	105.3%	101,511	100.9%
Duson '69 & '83	(6,371)	-14.1%	(12,004)	-8.6%
Scott '68 & '84	40,298	15.4%	191,058	24.1%
Scott EDD - AP '07	7,040	27.9%	27,621	35.3%
Youngsville '61,'81,'99 '12	122,847	49.9%	547,695	56.3%
Hotel/Motel	88,912	40.0%	123,646	17.9%
Total	\$ 1,770,953	10.3%	\$ 6,943,184	13.4%

**L.P.S.B. - SALES TAX DIVISION
REVENUE DISTRIBUTION RECAP - September 30, 2012**

Tax	Pro-Rata Expenses	Pro-Rata Interest	Legal	Audit	Tax Free Shopping	Gross Revenues	Net Revenues Distributed
LPSB '65	\$ 22,539.31	\$ 2,129.70	\$ 2,445.30	\$ 5,604.14	\$ 11.02	\$ 4,705,340.15	\$ 4,676,870.08
LPSB '88	9,998.57	944.75	1,222.66	2,802.09	5.52	2,085,016.09	2,071,932.00
LPSB '02	9,998.57	944.75	1,222.66	2,802.09	5.52	2,085,016.09	2,071,932.00
Parish	2,184.11	206.37		1,730.63		454,796.40	455,002.77
Sheriff	2,184.11	206.37		1,730.63		454,796.40	451,088.03
Lafayette '61	15,870.60	1,499.59	2,445.32	3,873.55	11.03	3,311,026.19	3,312,525.78
Lafayette '85	13,489.57	1,274.61	2,445.32	3,873.55	11.03	2,813,966.55	2,815,241.16
LAF EDD - 103	411.76	38.91				85,265.24	85,304.15
Broussard	2,264.67	213.98				471,813.18	469,762.49
Broussard '92	2,264.67	213.98				471,813.18	469,762.49
Broussard '12	1,136.81	107.42				237,736.96	236,707.57
Carencro	734.00	69.35				152,305.42	151,640.77
Carencro '93	734.00	69.35				152,305.42	151,640.77
Carencro I-49 EDD	322.25	30.45				67,901.05	67,609.25
Duson	187.98	17.76				38,720.22	38,550.00
Scott	1,450.11	137.02				302,089.37	300,776.28
Scott EDD - AP	152.17	14.38				32,264.97	32,127.18
Youngsville	1,503.81	142.09				313,830.71	312,468.99
Youngsville '12	590.78	55.82				123,521.91	122,986.95
Hotel / Motel	1,494.86	141.25				311,305.27	309,951.66
Totals	\$ 89,512.71	\$ 8,457.90	\$ 9,781.26	\$ 22,416.68	\$ 44.12	\$ 18,670,830.77	\$ 18,603,880.37

Expenses Due from City of Lafayette 42,431.73
Expenses Due from Parish Government 3,914.74

Net Revenues Distributed \$ 18,557,533.90

L.P.S.B. '65 - REVENUE DISTRIBUTION:

General Fund \$ 3,289,994.88
Bond Sinking Fund 623,351.04
Capital Improvement Fund 381,762.08
Minor Repair & Improvement Fund 381,762.08
\$ 4,676,870.08

Lafayette Parish School System

Budget Variance Recap

Actual Distributions Compared to Budget

FY 2012 - 2013

	A	B	(B - A)
Fund	Budget FY 12/13	Actual Distributions	Budget Variance
General Fund - 1965 Tax	\$ 9,471,896	\$ 10,310,058	\$ 838,162
Bond Sinking Fund	1,870,053	1,870,053	-
Est. Debt Svc. - 2012 ST Rev Bonds	375,000	-	(375,000)
Capital Improvement Fund	750,000	1,290,356	540,356
Minor Repair & Improvement Fund	750,000	1,290,356	540,356
Total 1965 Tax	\$ 13,216,949	\$ 14,760,823	\$ 1,543,874
1988 Tax (Dedicated)	5,827,022	6,433,094	606,072
Grand Total	\$ 19,043,971	\$ 21,193,917	\$ 2,149,946
2002 Tax (Dedicated)	\$ 5,827,022	\$ 6,433,094	\$ 606,072

Notes: (1) Columns A & B above represent three months.

Lafayette Parish School System

Statement of Revenue & Expenses, September 2012
Lafayette Parish School System 1965 Tax

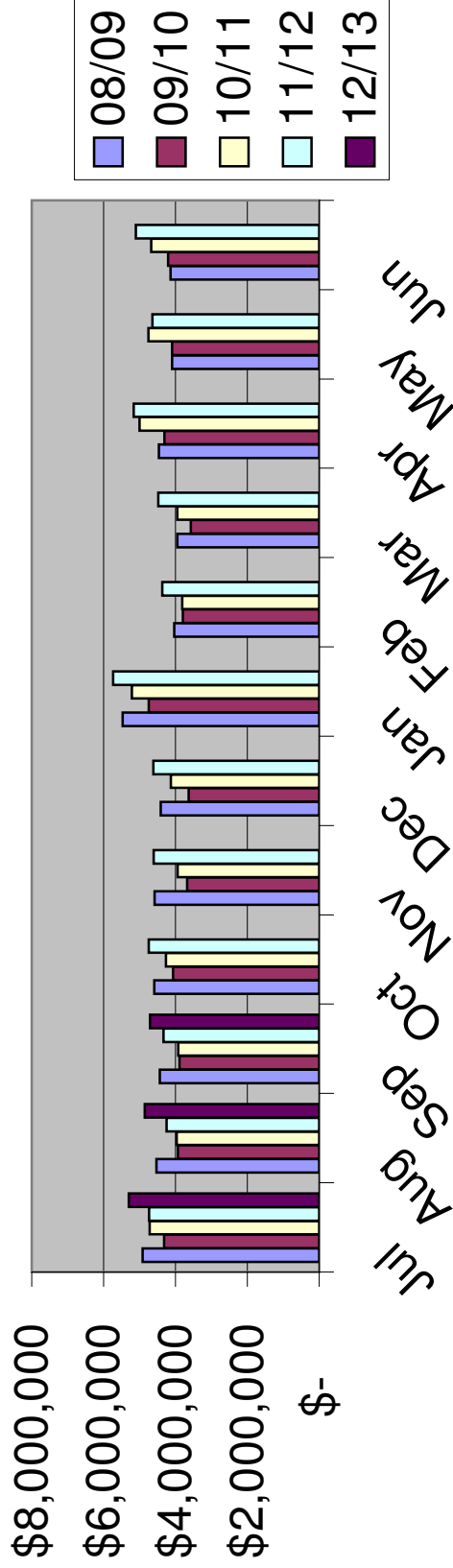
	<u>1965 Tax</u>
Sales Tax Revenues '65 Tax - Cash Received	\$ 4,705,340
Interest Income (pro-rata share, see page 4)	<u>2,130</u>
Total Revenues	<u>\$ 4,707,470</u>
Operating Expenses:	
Bank Charges	\$ 2,397
Computer Services	8,363
Equipment Leasing	150
Group Insurance	4,640
Dues & Publications	293
Office Space, etc.	5,185
Office Supplies, Expense	595
Postage, Printing	4,637
Retirement	13,354
Salaries	49,657
Travel	242
Asset Purchases	-
Annual Audit Fee	-
Total Operating Expenses (see p. 4)	<u>\$ 89,513</u>
65 Tax Pro-Rata Operating Expenses (25.18%)	\$ (22,540)
Direct Expenses - '65 Tax:	
Tax Free Shopping	(11)
Legal Fees	(2,445)
Contract Audit	<u>(5,604)</u>
Total Shared and Direct Expenses - '65 Tax	<u>(30,600)</u>
Net Revenues	<u>\$ 4,676,870</u>
Distribution of Revenues:	
General Fund	\$ 3,289,995
Bond Sinking Fund	623,351
Capital Projects Funds	763,524
Total Distributions	<u>\$ 4,676,870</u>

Lafayette Parish School System

**Budget Variance Schedule
1965 (1%) Sales Tax**

	A	B	(B - A)	
1965 SALES TAX	Budget 12/13	Actual Distribution 12/13	Budget Variance	Variance Percent
Jul	\$ 4,705,203	\$ 5,265,554	\$ 560,351	11.91%
Aug	4,211,339	4,818,399	607,060	14.41%
Sep	4,300,407	4,676,870	376,463	8.75%
Oct	4,702,250			
Nov	4,582,950			
Dec	4,582,730			
Jan	5,703,275			
Feb	4,335,907			
Mar	3,921,081			
Apr	4,971,607			
May	4,735,353			
Jun	4,642,617			
TOTAL	<u>\$55,394,719</u>	<u>\$14,760,823</u>	<u>\$ 1,543,874</u>	<u>11.68%</u>

Sales Tax Receipts - 1965 Tax



	08/09	09/10	10/11	11/12	12/13
Jul	\$ 4,912,401	\$ 4,319,142	\$ 4,720,794	\$ 4,735,105	\$ 5,302,425
Aug	4,530,761	3,927,910	3,968,864	4,245,714	4,853,061
Sep	4,437,656	3,885,880	3,923,252	4,334,349	4,705,340
Oct	4,587,370	4,070,413	4,268,122	4,746,207	
Nov	4,579,200	3,679,016	3,937,804	4,608,131	
Dec	4,408,859	3,629,939	4,130,792	4,613,990	
Jan	5,470,549	4,742,129	5,216,165	5,736,920	
Feb	4,032,573	3,797,010	3,810,812	4,364,666	
Mar	3,950,433	3,570,241	3,952,117	4,476,907	
Apr	4,462,078	4,306,160	5,001,154	5,166,627	
May	4,091,580	4,095,491	4,755,585	4,638,124	
Jun	4,139,719	4,205,117	4,678,155	5,103,867	
Total	\$ 53,603,179	\$ 48,228,448	\$ 52,363,616	\$ 56,770,607	\$ 14,860,826

Lafayette Parish School System

Statement of Revenue & Expenses, September 2012
Lafayette Parish School System 1988 Tax

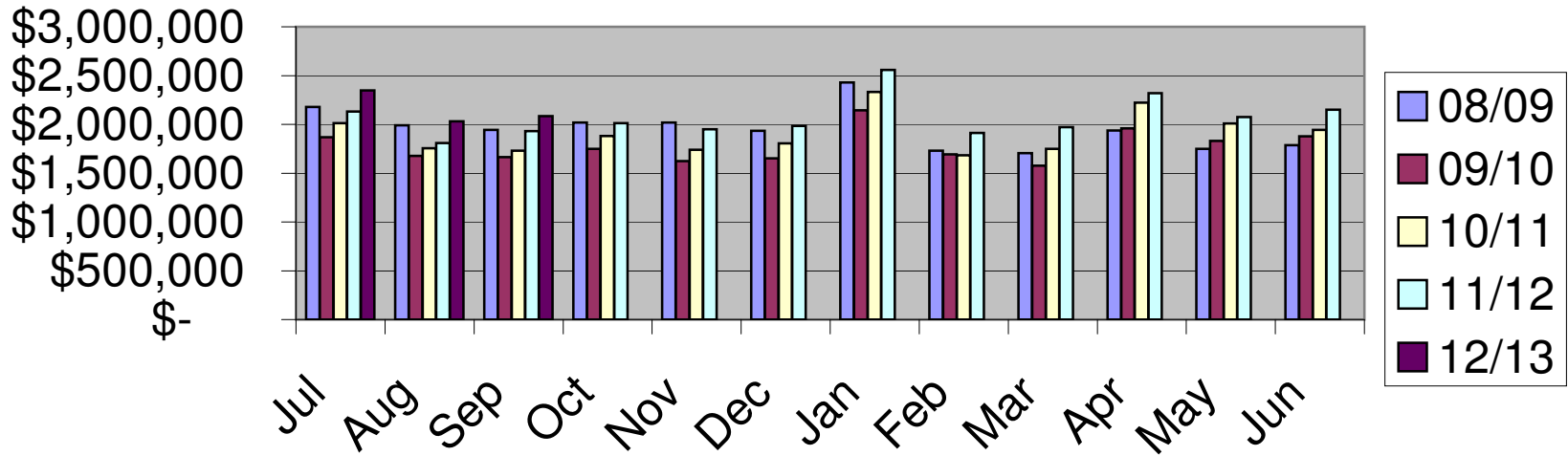
	<u>1988 Tax</u>
Sales Tax Revenues '88 Tax - Cash Received	\$ 2,085,016
Interest Income (pro-rata share, see page 4)	<u>945</u>
Total Revenues	\$ 2,085,961
Operating Expenses:	
Bank Charges	\$ 2,397
Computer Services	8,363
Equipment Leasing	150
Group Insurance	4,640
Dues & Publications	293
Office Space, etc.	5,185
Office Supplies, Expense	595
Postage, Printing	4,637
Retirement	13,354
Salaries	49,657
Travel	242
Asset Purchases	-
Annual Audit Fee	-
Total Operating Expenses (see p. 4)	<u>\$ 89,513</u>
88 Tax Pro-Rata Operating Expenses (11.17%)	\$ (9,999)
Direct Expenses - '88 Tax:	
Tax Free Shopping	(5)
Legal Fees	(1,223)
Contract Audit	<u>(2,802)</u>
Total Shared and Direct Expenses - '88 Tax	(14,029)
Net Revenues	<u>\$ 2,071,932</u>

Lafayette Parish School System

**Budget Variance Schedule
1988 (1/2%) Sales Tax**

	A	B	(B - A)	
1988	Budget	Actual	Budget	Variance
SALES TAX	12/13	Distribution	Variance	Percent
		12/13		
Jul	\$ 2,118,653	\$ 2,330,405	\$ 211,752	9.99%
Aug	1,792,223	2,030,757	238,534	13.31%
Sep	1,916,146	2,071,932	155,786	8.13%
Oct	1,990,664			
Nov	1,937,739			
Dec	1,969,250			
Jan	2,541,297			
Feb	1,898,545			
Mar	1,734,747			
Apr	2,209,868			
May	2,001,830			
Jun	1,927,901			
TOTAL	<u><u>\$24,038,863</u></u>	<u><u>\$ 6,433,094</u></u>	<u><u>\$ 606,072</u></u>	<u><u>10.40%</u></u>

Sales Tax Receipts - 1988 Tax



12

	08/09	09/10	10/11	11/12	12/13
Jul	\$ 2,180,186	\$ 1,868,502	\$ 2,013,375	\$ 2,132,744	\$ 2,347,619
Aug	1,991,726	1,676,602	1,755,952	1,807,905	2,030,757
Sep	1,942,168	1,663,043	1,731,706	1,932,046	2,085,016
Oct	2,017,413	1,749,943	1,880,225	2,011,008	
Nov	2,017,888	1,623,434	1,741,141	1,948,853	
Dec	1,934,934	1,652,413	1,805,132	1,983,603	
Jan	2,430,373	2,144,966	2,332,923	2,557,076	
Feb	1,730,015	1,694,237	1,682,453	1,911,840	
Mar	1,706,492	1,575,967	1,749,073	1,972,622	
Apr	1,936,941	1,957,735	2,223,618	2,320,415	
May	1,749,180	1,829,698	2,010,468	2,074,425	
Jun	1,787,472	1,876,463	1,943,960	2,151,657	
Total	\$ 23,424,788	\$ 21,313,003	\$ 22,870,026	\$ 24,804,194	\$ 6,463,392

Lafayette Parish School System

Statement of Revenue & Expenses, September 2012
Lafayette Parish School System 2002 Tax

	<u>2002 Tax</u>
Sales Tax Revenues '02 Tax - Cash Received	\$ 2,085,016
Interest Income (pro-rata share, see page 4)	<u>945</u>
Total Revenues	\$ 2,085,961
Operating Expenses:	
Bank Charges	\$ 2,397
Computer Services	8,363
Equipment Leasing	150
Group Insurance	4,640
Dues & Publications	293
Office Space, etc.	5,185
Office Supplies, Expense	595
Postage, Printing	4,637
Retirement	13,354
Salaries	49,657
Travel	242
Asset Purchases	-
Annual Audit Fee	-
Total Operating Expenses (see p. 4)	<u>\$ 89,513</u>
02 Tax Pro-Rata Operating Expenses (11.17%)	\$ (9,999)
Direct Expenses - '02 Tax:	
Tax Free Shopping	(5)
Legal Fees	(1,223)
Contract Audit	<u>(2,802)</u>
Total Shared and Direct Expenses - '02 Tax	(14,029)
Net Revenues	<u>\$ 2,071,932</u>

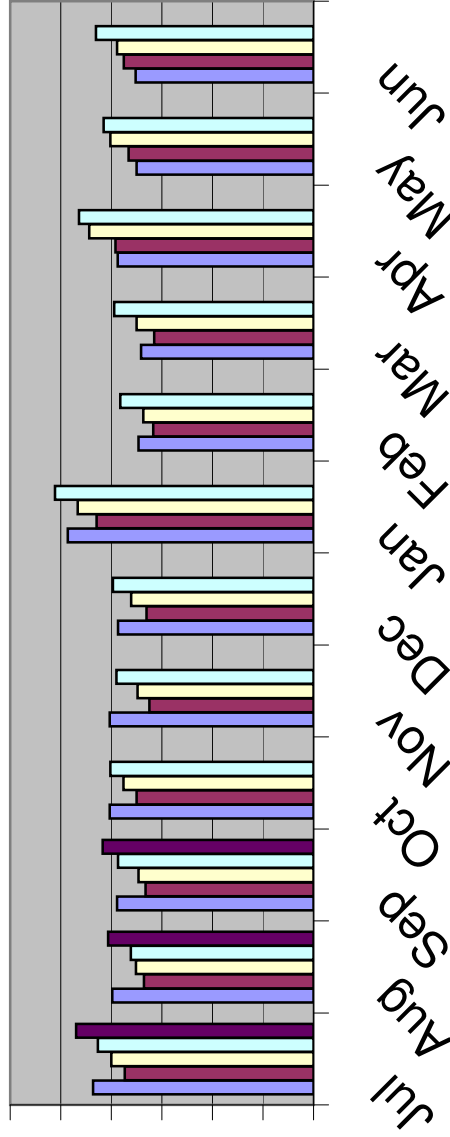
Lafayette Parish School System

**Budget Variance Schedule
2002 (1/2%) Sales Tax**

	A	B	(B - A)	
2002	Budget	Actual	Budget	Variance
SALES TAX	12/13	Distribution	Variance	Percent
		12/13		
Jul	\$ 2,118,653	\$ 2,330,405	\$ 211,752	9.99%
Aug	1,792,223	2,030,757	238,534	13.31%
Sep	1,916,146	2,071,932	155,786	8.13%
Oct	1,990,664			
Nov	1,937,739			
Dec	1,969,250			
Jan	2,557,076			
Feb	1,898,428			
Mar	1,734,576			
Apr	2,203,898			
May	2,001,830			
Jun	1,927,901			
TOTAL	<u><u>\$24,048,384</u></u>	<u><u>\$ 6,433,094</u></u>	<u><u>606,072</u></u>	<u><u>10.40%</u></u>

Sales Tax Receipts - 2002 Tax

\$3,000,000
 \$2,500,000
 \$2,000,000
 \$1,500,000
 \$1,000,000
 \$500,000
 \$-



08/09
 09/10
 10/11
 11/12
 12/13

	08/09	09/10	10/11	11/12	12/13
Jul	\$ 2,180,105	\$ 1,868,317	\$ 1,999,103	\$ 2,132,744	\$ 2,347,619
Aug	1,991,403	1,676,526	1,755,809	1,807,905	2,030,757
Sep	1,942,026	1,662,734	1,731,534	1,932,046	2,085,016
Oct	2,017,207	1,749,978	1,880,110	2,011,008	
Nov	2,015,065	1,623,412	1,741,027	1,948,853	
Dec	1,934,754	1,652,336	1,804,989	1,983,603	
Jan	2,430,227	2,144,919	2,332,752	2,557,076	
Feb	1,729,851	1,586,876	1,682,282	1,911,723	
Mar	1,706,380	1,575,967	1,748,901	1,972,622	
Apr	1,936,461	1,957,735	2,217,626	2,320,415	
May	1,749,034	1,829,612	2,010,468	2,074,425	
Jun	1,760,918	1,876,463	1,943,960	2,151,657	
Total	\$ 23,393,431	\$ 21,204,875	\$ 22,848,561	\$ 24,804,077	\$ 6,463,392