

SALES TAX DIVISION  
LAFAYETTE PARISH SCHOOL SYSTEM

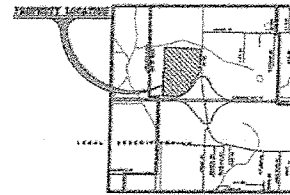
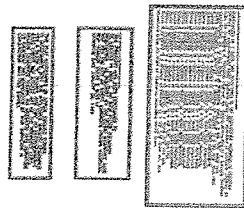
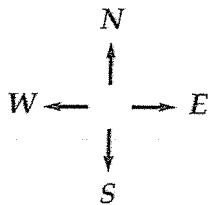
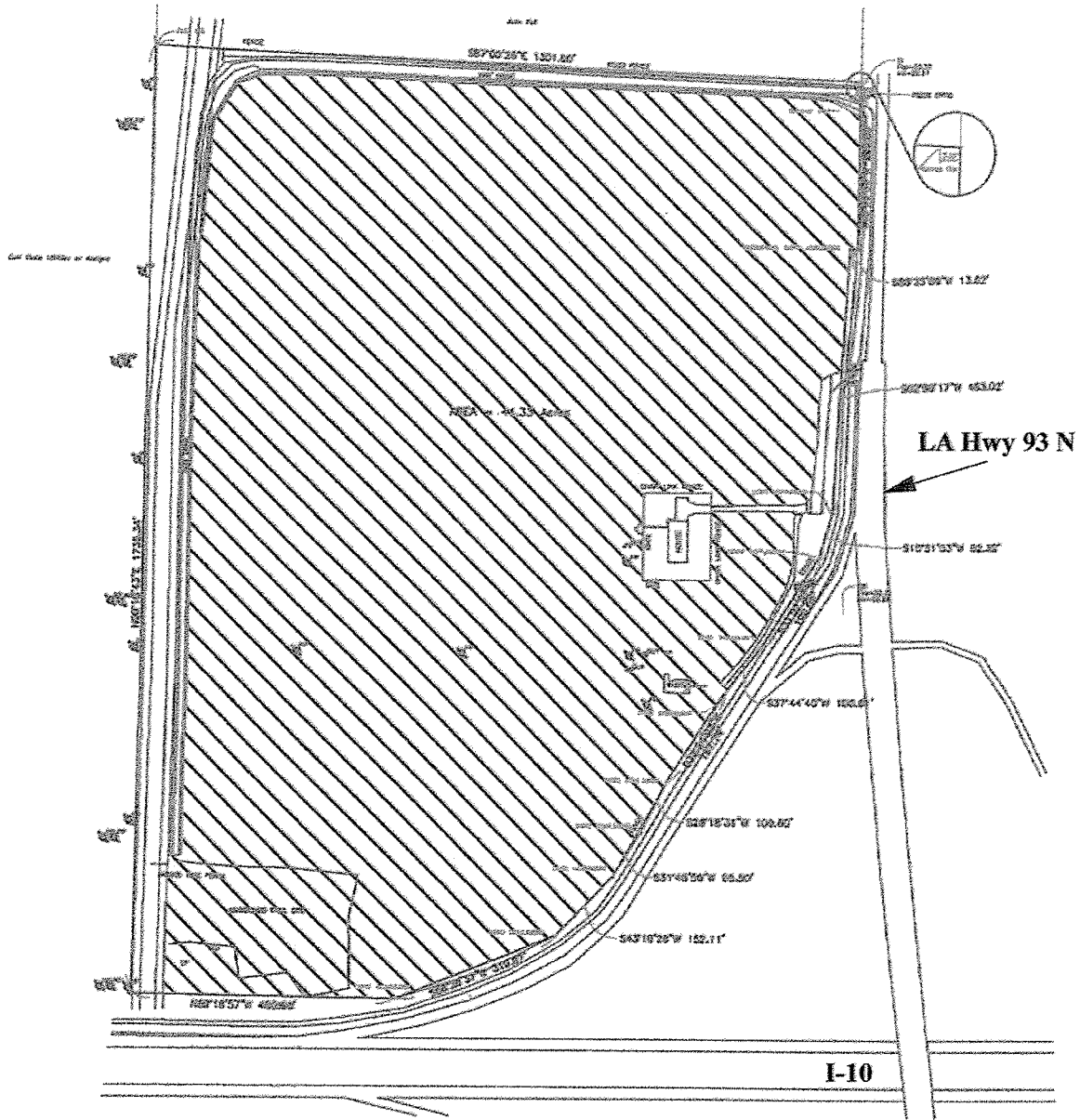
CITY OF SCOTT  
DESTINATION POINTE ECONOMIC DEVELOPMENT DISTRICT  
ORDINANCE NO. 2007-6

1% TAX INCREASE – COLLECTION START DATE: NOVEMBER 1, 2007

HIGHWAY 93 NORTH (ODD)

101,103,105,107,109,111,113,115,117,119,121,123,125,127,129,131,133,135,137,139,141,143,  
145,147,149,151,153,155,157,159,161,163,165,167,169,171,173,175,177,179,181,183,185,187,  
189,191,193,195,197,199,201,203,205,207,209,211,213,215,217,219,221,223,225,227,229,231,  
233,235,237,239,241,243,245,247,249,251,253,255,257,259,261,263,265,267,269,271,273,275,  
277,279,281,283,285,287,289,291,293,295,297,299

# City of Scott - Destination Pointe Economic Development District



PROPERTY LOCATION  
THIRD MAP  
DATE: 11/11/11  
SCALE: 1" = 100'

<table border="1"> <tr> <th>NO.</th> <th>REVISION</th> <th>DATE</th> </tr> <tr> <td> </td> <td> </td> <td> </td> </tr> </table>	NO.	REVISION	DATE				<b>City of Scott</b> Economic Development District 1000 W. Main Street, Scott, MO 64751	PREPARED BY: <b>CL. ROEMER, LLC</b> 1000 W. Main Street, Scott, MO 64751 (660) 271-1111	DATE: 11/11/11
NO.	REVISION	DATE							