

Sales Tax Collection Report
For The Month Ending 10/31/12
September 2012 Sales

Report Prepared By The Sales Tax Department

Lafayette Parish School System

**Sales Tax Report
Table of Contents**

Page 3 Sales Tax Recap of Gross Receipts Collected During October 2012 for all Jurisdictions

Page 4 Schedule of Pro-Rata Expenses & Interest Income, October 2012
Schedule of Increase/Decrease in Cash Received, October 2012

Page 5 Revenue Distribution Recap

Page 6 Budget Variance Schedule Recap, October 2012

School Board 1965 Sales Tax (1%):

Page 7 Statement of Revenue and Expenses, October 2012 - Distribution of Revenues

Page 8 General Fund Revenues Compared to Budget

Page 9 Graph of Gross Receipts (Fiscal Years 08/09 thru 12/13)

School Board 1988 Sales Tax (1/2%):

Page 10 Statement of Revenue and Expenses, October 2012

Page 11 General Fund Revenues Compared to Budget

Page 12 Graph of Gross Receipts (Fiscal Years 08/09 thru 12/13)

School Board 2002 Sales Tax (1/2%):

Page 13 Statement of Revenue and Expenses, October 2012

Page 14 General Fund Revenues Compared to Budget

Page 15 Graph of Gross Receipts (Fiscal Years 08/09 thru 12/13)

Lafayette Parish School System
Sales Tax Recap For The Month Ending October 31, 2012

Note: This schedule represents taxes collected in
 October 2012 on September 2012 sales.

Tax	Tax Rate	Taxable Sales	Sales Tax Less Vendors Comp.	Food & Drug Exempt Tax	Penalty & Interest	Audits	Dept. of Motor Vehicle Distribution	Total Cash Received	Pro-Rata Percent
Sch Board '65	1 %	\$ 466,833,913	4,590,546	\$ -	\$ 38,073	\$ 34,568	\$ 411,293	\$ 5,074,480	25.73%
Sch Board '88	1/2 %	403,268,473	1,926,938	317,827	18,163	17,284	205,647	2,168,032	10.99%
Sch.Board '02	1/2 %	403,268,473	1,926,938	317,827	18,163	17,284	205,647	2,168,032	10.99%
Parish Gov.	1 %	36,106,414	348,102		3,008	4,410	146,094	501,614	2.54%
Sheriff, Laf Parish	1 %	36,106,414	348,102		3,008	4,410	146,094	501,614	2.54%
Lafayette '61	1 %	329,624,810	3,208,146		28,297	25,832	198,794	3,461,069	17.55%
ω Lafayette '85	1 %	276,653,610	2,678,434	529,712	28,297	25,832	198,794	2,931,357	14.86%
Lafayette TIF Zones	1 %	8,453,714	83,975		50	-	-	84,025	0.43%
Broussard	2 1/2 %	48,860,682	1,261,173		2,457	-	52,778	1,316,408	6.68%
Carencro	2%	13,531,132	268,701		3,125	-	14,772	286,598	1.46%
Carencro TIF Zone	1%	6,796,042	67,253		59	-	-	67,312	0.34%
Duson	2%	2,105,121	45,318		143	7,428	3,252	56,141	0.28%
Scott	2 %	15,670,488	313,423		4,138	-	25,546	343,107	1.74%
Scott TIF Zones	1 %	3,301,552	33,559		21	-	1,468	35,048	0.18%
Youngsville	3 1/2 %	12,481,552	422,545		744	1,430	59,577	484,296	2.45%
Total Sales Tax			17,523,153	1,165,366	147,746	138,478	1,669,756	19,479,133	
Hotel/Motel Tax	4%	6,102,950	244,118			-	-	244,118	1.24%
TOTAL ----->			\$ 17,767,271	\$ 1,165,366	\$ 147,746	\$ 138,478	\$ 1,669,756	\$ 19,723,251	100.00%

Lafayette Parish School System

Schedule of Pro-Rata Expenses & Interest Income, October 2012

Tax:	Pro-Rata Percent	Pro-Rata Share of Expense	Pro-Rata Share of Interest Inc.
Sch.Bd. '65	25.73%	\$ 20,946	\$ 2,715
Sch.Bd. '88	10.99%	8,947	1,159
Sch.Bd. '02	10.99%	8,947	1,159
Parish	2.54%	2,068	268
Sheriff, Laf Parish	2.54%	2,068	268
Laf '61	17.55%	14,287	1,852
Laf '85	14.86%	12,097	1,568
Laf EDD - 103	0.43%	350	45
Broussard	6.68%	5,438	705
Carencro	1.46%	1,189	154
Carencro I-49 EDD	0.34%	277	36
Duson	0.28%	228	29
Scott	1.74%	1,416	184
Scott EDD - AP	0.18%	147	19
Youngsville	2.45%	1,994	258
Hotel/Motel	1.24%	1,009	131
Total	100.00%	\$ 81,408 (Note 1)	\$ 10,550

Note 1: The detail of these expenses by cost category is listed on pages 7, 10, and 13.

Note 2: The cost of operation (operating expenses divided by cash received) is 0.4%.

Schedule of Increase/Decrease in Cash Received, October 2012

Tax:	October 2012 Cash Received Compared to October 2011		YTD Cash Received Compared to Prior YTD	
Sch.Bd. '65	\$ 328,273	8.2%	\$ 1,873,932	10.4%
Sch.Bd. '88	157,025	7.8%	747,722	9.5%
Sch.Bd. '02	157,025	7.8%	747,722	9.5%
Parish '72	43,055	9.4%	182,577	9.6%
Sheriff, Laf Parish '03	43,055	9.4%	182,577	9.6%
Laf '61	132,460	4.0%	804,611	6.3%
Laf '85	105,380	3.7%	631,899	5.8%
Laf EDD - 103 '08	(2,660)	-3.1%	86,639	33.4%
Broussard '75, '92 & '12	547,850	70.6%	1,976,631	64.7%
Carencro '67 & '93	81,011	39.4%	321,819	39.3%
Carencro I-49 EDD '09	33,813	100.9%	135,325	100.9%
Duson '69 & '83	16,036	40.0%	4,032	2.3%
Scott '68 & '84	37,878	12.4%	228,936	20.9%
Scott EDD - AP '07	5,521	18.7%	33,142	30.8%
Youngsville '61, '81, '99 '12	167,087	52.7%	714,782	55.6%
Hotel/Motel	38,428	18.7%	162,074	18.1%
Total	\$ 1,891,237	10.3%	\$ 8,834,420	12.6%

**L.P.S.B. - SALES TAX DIVISION
REVENUE DISTRIBUTION RECAP**

October 31, 2012

Tax	Pro-Rata Expenses	Pro-Rata Interest	Legal	Audit	Tax Free Shopping	Gross Revenues	Net Revenues Distributed
LPSB '65	\$20,946.22	\$2,714.59	\$1,320.31	\$12,154.40	\$9.26	\$5,074,480.12	\$5,042,764.52
LPSB '88	8,946.72	1,159.48	660.15	6,077.23	4.64	2,168,032.35	2,153,503.09
LPSB '02	8,946.72	1,159.48	660.15	6,077.23	4.64	2,168,032.35	2,153,503.09
Parish	2,067.76	267.98		2,709.78		501,613.72	501,881.70
Sheriff	2,067.76	267.98		2,709.78		501,613.72	497,104.16
Lafayette '61	14,287.08	1,851.57	1,320.31	9,444.68	9.28	3,461,068.60	3,462,920.17
Lafayette '85	12,097.21	1,567.77	1,320.31	9,444.68	9.28	2,931,357.39	2,932,925.16
LAF EDD - 103	350.05	45.37				84,025.03	84,070.40
Broussard	2,173.59	281.69				525,643.25	523,751.35
Broussard '92	2,173.59	281.69				525,643.25	523,751.35
Broussard '12	1,090.87	141.37				265,121.25	264,171.75
Carencro	594.28	77.02				143,299.13	142,781.87
Carencro '93	594.28	77.02				143,299.13	142,781.87
Carencro I-49 EDD	276.79	35.87				67,311.69	67,070.77
Duson	227.94	29.54				56,140.99	55,942.59
Scott	1,416.50	183.57				343,106.59	341,873.66
Scott EDD - AP	146.53	18.99				35,048.29	34,920.75
Youngsville	1,432.78	185.68				347,575.14	346,328.04
Youngsville '12	561.71	72.80				136,721.28	136,232.37
Hotel / Motel	1,009.46	130.82				244,117.77	243,239.13
Totals	\$81,407.84	\$10,550.28	\$5,281.23	\$48,617.78	\$37.10	\$19,723,251.04	\$19,651,517.79

Expenses Due from City of Lafayette	48,282.88
Expenses Due from Parish Government	4,777.54

Net Revenues Distributed	<u>\$19,598,457.37</u>
--------------------------	------------------------

L.P.S.B. '65 - REVENUE DISTRIBUTION:

General Fund	\$3,681,053.32
Bond Sinking Fund	623,351.04
Capital Improvement Fund	369,180.08
Minor Repair & Improvement Fund	369,180.08
	<u>\$5,042,764.52</u>

Lafayette Parish School System

Budget Variance Recap

Actual Distributions Compared to Budget

FY 2012 - 2013

	A	B	(B - A)
Fund	Budget FY 12/13	Actual Distributions	Budget Variance
General Fund - 1965 Tax	\$ 12,925,795	\$ 13,991,111	\$ 1,065,317
Bond Sinking Fund	2,493,404	2,493,404	-
Est. Debt Svc. - 2012 ST Rev Bonds	500,000	-	(500,000)
Capital Improvement Fund	1,000,000	1,659,536	659,536
Minor Repair & Improvement Fund	1,000,000	1,659,536	659,536
Total 1965 Tax	\$ 17,919,199	\$ 19,803,588	\$ 1,884,389
1988 Tax (Dedicated)	7,817,686	8,586,597	768,911
Grand Total	\$ 25,736,885	\$ 28,390,185	\$ 2,653,300
2002 Tax (Dedicated)	\$ 7,817,686	\$ 8,586,597	\$ 768,911

Notes: (1) Columns A & B above represent Four months.

Lafayette Parish School System

Statement of Revenue & Expenses, October 2012
Lafayette Parish School System 1965 Tax

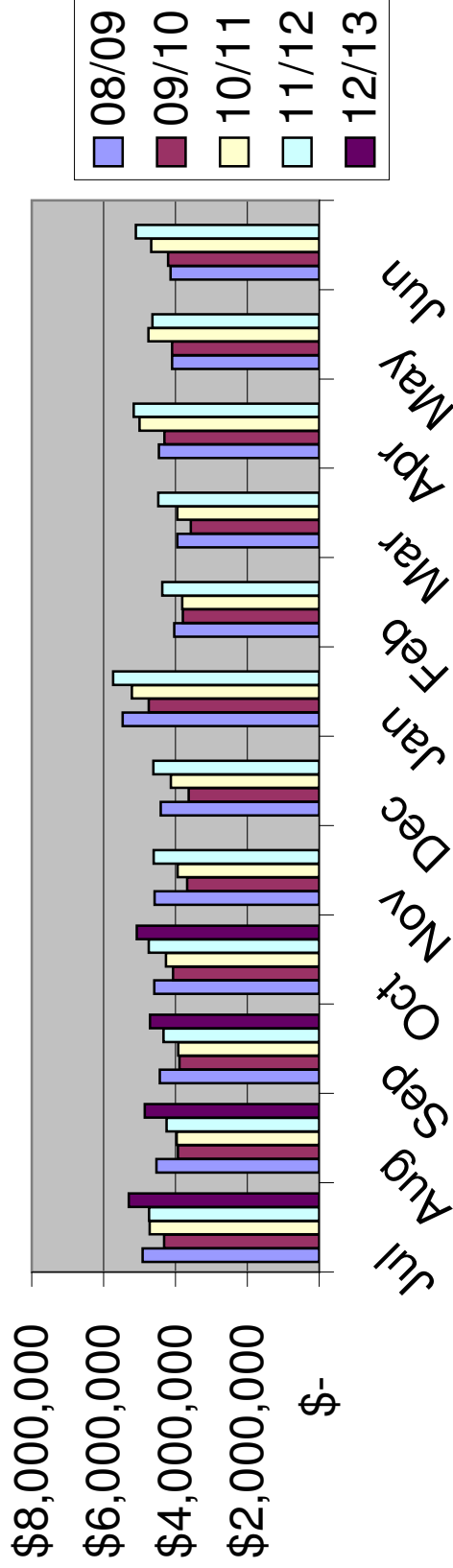
	<u>1965 Tax</u>
Sales Tax Revenues '65 Tax - Cash Received	\$ 5,074,480
Interest Income (pro-rata share, see page 4)	<u>2,715</u>
Total Revenues	<u>\$ 5,077,195</u>
Operating Expenses:	
Bank Charges	\$ 2,217
Computer Services	1,549
Equipment Leasing	150
Group Insurance	4,641
Dues & Publications	577
Office Space, etc.	3,978
Office Supplies, Expense	332
Postage, Printing	3,286
Retirement	13,354
Salaries	49,657
Travel	1,667
Asset Purchases	-
Annual Audit Fee	-
Total Operating Expenses (see p. 4)	<u>\$ 81,408</u>
65 Tax Pro-Rata Operating Expenses (25.73%)	\$ (20,946)
Direct Expenses - '65 Tax:	
Tax Free Shopping	(9)
Legal Fees	(1,320)
Contract Audit	<u>(12,155)</u>
Total Shared and Direct Expenses - '65 Tax	<u>(34,430)</u>
Net Revenues	<u>\$ 5,042,765</u>
Distribution of Revenues:	
General Fund	\$ 3,681,053
Bond Sinking Fund	623,351
Capital Projects Funds	738,361
Total Distributions	<u>\$ 5,042,765</u>

Lafayette Parish School System

**Budget Variance Schedule
1965 (1%) Sales Tax**

	A	B	(B - A)	
1965 SALES TAX	Budget 12/13	Actual Distribution 12/13	Budget Variance	Variance Percent
Jul	\$ 4,705,203	\$ 5,265,554	\$ 560,351	11.91%
Aug	4,211,339	4,818,399	607,060	14.41%
Sep	4,300,407	4,676,870	376,463	8.75%
Oct	4,702,250	5,042,765	340,515	7.24%
Nov	4,582,950			
Dec	4,582,730			
Jan	5,703,275			
Feb	4,335,907			
Mar	3,921,081			
Apr	4,971,607			
May	4,735,353			
Jun	4,642,617			
TOTAL	<u><u>\$55,394,719</u></u>	<u><u>\$19,803,588</u></u>	<u><u>\$ 1,884,389</u></u>	<u><u>10.52%</u></u>

Sales Tax Receipts - 1965 Tax



	08/09	09/10	10/11	11/12	12/13
Jul	\$ 4,912,401	\$ 4,319,142	\$ 4,720,794	\$ 4,735,105	\$ 5,302,425
Aug	4,530,761	3,927,910	3,968,864	4,245,714	4,853,061
Sep	4,437,656	3,885,880	3,923,252	4,334,349	4,705,340
Oct	4,587,370	4,070,413	4,268,122	4,746,207	5,074,480
Nov	4,579,200	3,679,016	3,937,804	4,608,131	
Dec	4,408,859	3,629,939	4,130,792	4,613,990	
Jan	5,470,549	4,742,129	5,216,165	5,736,920	
Feb	4,032,573	3,797,010	3,810,812	4,364,666	
Mar	3,950,433	3,570,241	3,952,117	4,476,907	
Apr	4,462,078	4,306,160	5,001,154	5,166,627	
May	4,091,580	4,095,491	4,755,585	4,638,124	
Jun	4,139,719	4,205,117	4,678,155	5,103,867	
Total	\$ 53,603,179	\$ 48,228,448	\$ 52,363,616	\$ 56,770,607	\$ 19,935,306

Lafayette Parish School System

Statement of Revenue & Expenses, October 2012
Lafayette Parish School System 1988 Tax

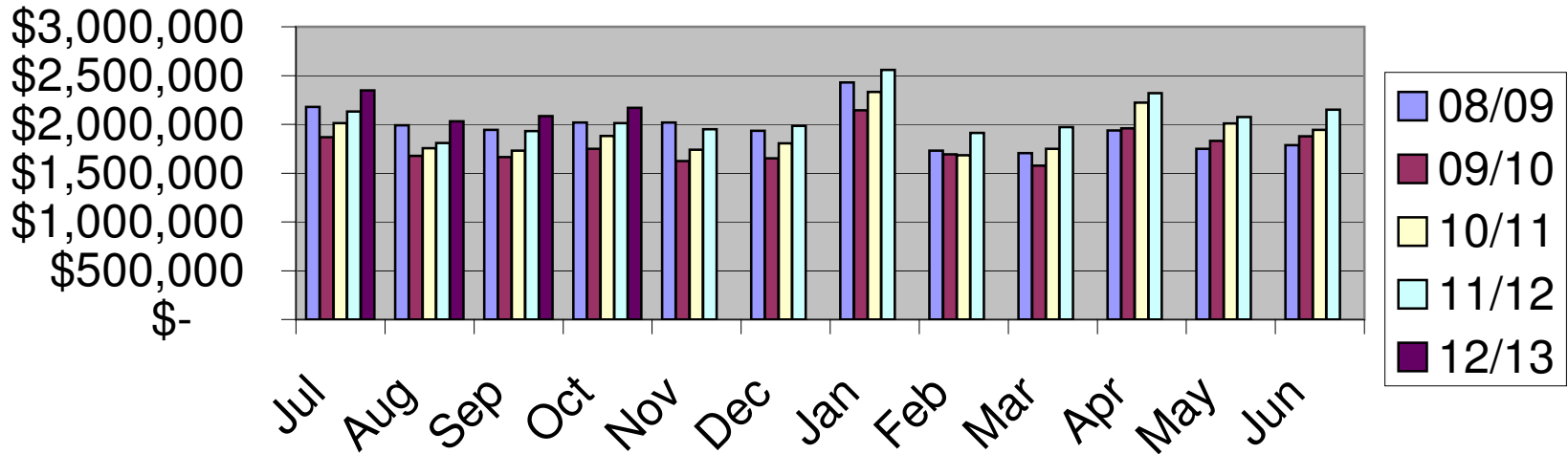
	<u>1988 Tax</u>
Sales Tax Revenues '88 Tax - Cash Received	\$ 2,168,032
Interest Income (pro-rata share, see page 4)	<u>1,160</u>
Total Revenues	\$ 2,169,192
Operating Expenses:	
Bank Charges	\$ 2,217
Computer Services	1,549
Equipment Leasing	150
Group Insurance	4,641
Dues & Publications	577
Office Space, etc.	3,978
Office Supplies, Expense	332
Postage, Printing	3,286
Retirement	13,354
Salaries	49,657
Travel	1,667
Asset Purchases	-
Annual Audit Fee	-
Total Operating Expenses (see p. 4)	<u>\$ 81,408</u>
88 Tax Pro-Rata Operating Expenses (10.99%)	\$ (8,947)
Direct Expenses - '88 Tax:	
Tax Free Shopping	(5)
Legal Fees	(660)
Contract Audit	<u>(6,077)</u>
Total Shared and Direct Expenses - '88 Tax	(15,689)
Net Revenues	<u>\$ 2,153,503</u>

Lafayette Parish School System

**Budget Variance Schedule
1988 (1/2%) Sales Tax**

	A	B	(B - A)	
1988	Budget	Actual	Budget	Variance
SALES TAX	12/13	Distribution	Variance	Percent
		12/13		
Jul	\$ 2,118,653	\$ 2,330,405	\$ 211,752	9.99%
Aug	1,792,223	2,030,757	238,534	13.31%
Sep	1,916,146	2,071,932	155,786	8.13%
Oct	1,990,664	2,153,503	162,839	8.18%
Nov	1,937,739			
Dec	1,969,250			
Jan	2,541,297			
Feb	1,898,545			
Mar	1,734,747			
Apr	2,209,868			
May	2,001,830			
Jun	1,927,901			
TOTAL	<u><u>\$24,038,863</u></u>	<u><u>\$ 8,586,597</u></u>	<u><u>\$ 768,911</u></u>	<u><u>9.84%</u></u>

Sales Tax Receipts - 1988 Tax



12

	08/09	09/10	10/11	11/12	12/13
Jul	\$ 2,180,186	\$ 1,868,502	\$ 2,013,375	\$ 2,132,744	\$ 2,347,619
Aug	1,991,726	1,676,602	1,755,952	1,807,905	2,030,757
Sep	1,942,168	1,663,043	1,731,706	1,932,046	2,085,016
Oct	2,017,413	1,749,943	1,880,225	2,011,008	2,168,032
Nov	2,017,888	1,623,434	1,741,141	1,948,853	
Dec	1,934,934	1,652,413	1,805,132	1,983,603	
Jan	2,430,373	2,144,966	2,332,923	2,557,076	
Feb	1,730,015	1,694,237	1,682,453	1,911,840	
Mar	1,706,492	1,575,967	1,749,073	1,972,622	
Apr	1,936,941	1,957,735	2,223,618	2,320,415	
May	1,749,180	1,829,698	2,010,468	2,074,425	
Jun	1,787,472	1,876,463	1,943,960	2,151,657	
Total	\$ 23,424,788	\$ 21,313,003	\$ 22,870,026	\$ 24,804,194	\$ 8,631,424

Lafayette Parish School System

Statement of Revenue & Expenses, October 2012
Lafayette Parish School System 2002 Tax

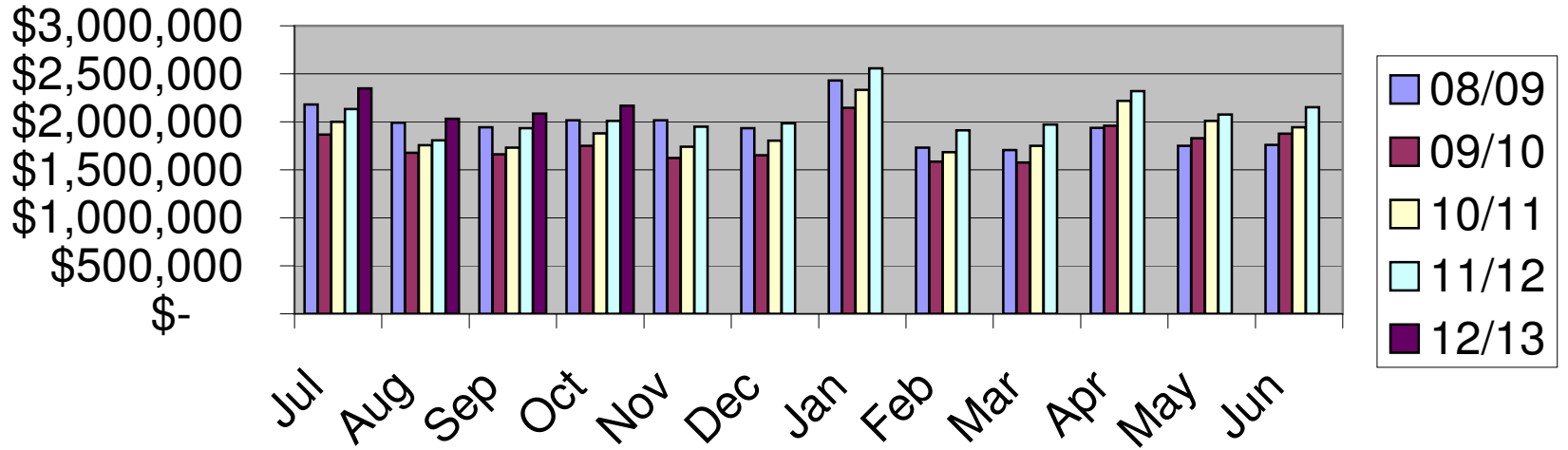
	<u>2002 Tax</u>
Sales Tax Revenues '02 Tax - Cash Received	\$ 2,168,032
Interest Income (pro-rata share, see page 4)	<u>1,160</u>
Total Revenues	\$ 2,169,192
Operating Expenses:	
Bank Charges	\$ 2,217
Computer Services	1,549
Equipment Leasing	150
Group Insurance	4,641
Dues & Publications	577
Office Space, etc.	3,978
Office Supplies, Expense	332
Postage, Printing	3,286
Retirement	13,354
Salaries	49,657
Travel	1,667
Asset Purchases	-
Annual Audit Fee	-
Total Operating Expenses (see p. 4)	<u>\$ 81,408</u>
02 Tax Pro-Rata Operating Expenses (10.99%)	\$ (8,947)
Direct Expenses - '02 Tax:	
Tax Free Shopping	(5)
Legal Fees	(660)
Contract Audit	<u>(6,077)</u>
Total Shared and Direct Expenses - '02 Tax	(15,689)
Net Revenues	<u>\$ 2,153,503</u>

Lafayette Parish School System

**Budget Variance Schedule
2002 (1/2%) Sales Tax**

	A	B	(B - A)	
	Budget	Actual	Budget	Variance
2002 SALES TAX	12/13	Distribution 12/13	Variance	Percent
Jul	\$ 2,118,653	\$ 2,330,405	\$ 211,752	9.99%
Aug	1,792,223	2,030,757	238,534	13.31%
Sep	1,916,146	2,071,932	155,786	8.13%
Oct	1,990,664	2,153,503	162,839	8.18%
Nov	1,937,739			
Dec	1,969,250			
Jan	2,557,076			
Feb	1,898,428			
Mar	1,734,576			
Apr	2,203,898			
May	2,001,830			
Jun	1,927,901			
TOTAL	<u><u>\$24,048,384</u></u>	<u><u>\$ 8,586,597</u></u>	<u><u>768,911</u></u>	<u><u>9.84%</u></u>

Sales Tax Receipts - 2002 Tax



15

	08/09	09/10	10/11	11/12	12/13
Jul	\$ 2,180,105	\$ 1,868,317	\$ 1,999,103	\$ 2,132,744	\$ 2,347,619
Aug	1,991,403	1,676,526	1,755,809	1,807,905	2,030,757
Sep	1,942,026	1,662,734	1,731,534	1,932,046	2,085,016
Oct	2,017,207	1,749,978	1,880,110	2,011,008	2,168,032
Nov	2,015,065	1,623,412	1,741,027	1,948,853	
Dec	1,934,754	1,652,336	1,804,989	1,983,603	
Jan	2,430,227	2,144,919	2,332,752	2,557,076	
Feb	1,729,851	1,586,876	1,682,282	1,911,723	
Mar	1,706,380	1,575,967	1,748,901	1,972,622	
Apr	1,936,461	1,957,735	2,217,626	2,320,415	
May	1,749,034	1,829,612	2,010,468	2,074,425	
Jun	1,760,918	1,876,463	1,943,960	2,151,657	
Total	\$ 23,393,431	\$ 21,204,875	\$ 22,848,561	\$ 24,804,077	\$ 8,631,424